

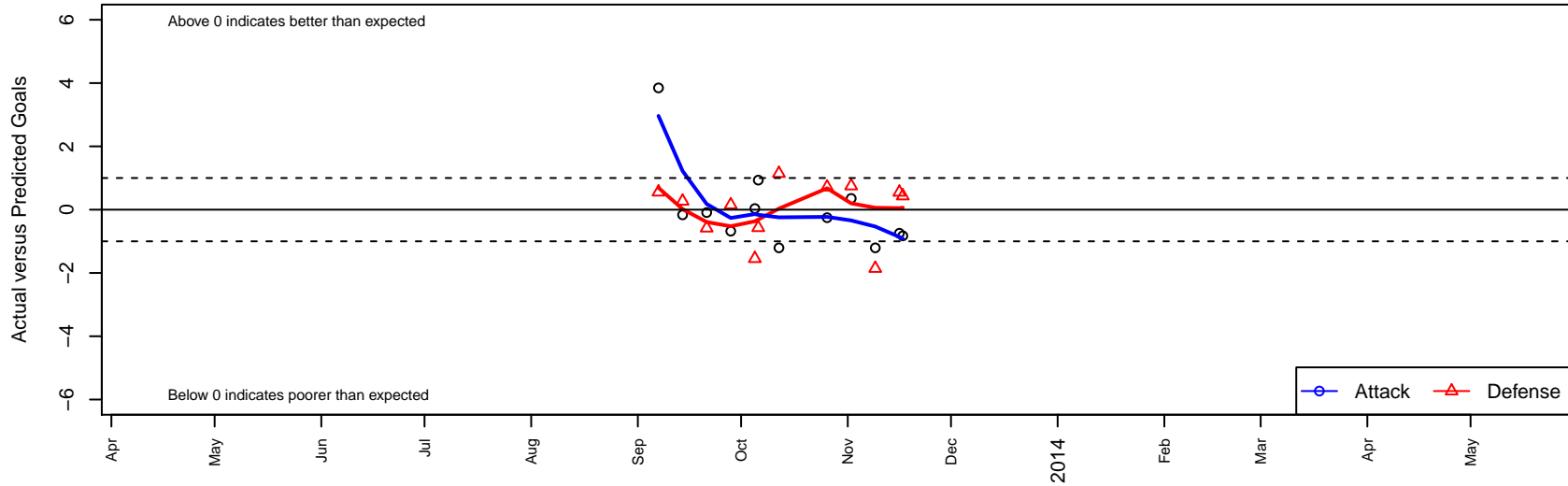
Pateadores Pre-Academy B99

, CAS
 B99 total strength=1462
 attack=11.56 defense=8.48
 fall league = SCDL FI1 U14
 alt names used:
 Pateadores Pre - Academy

Venues played:
 SCDL FI1 U14
 SoCal DL Fall Showcase Flight 1 U14



Pateadores Pre-Academy B99
 Dots are actual minus expected GF (blue circles) and GA (red triangles).
 Blue line is smoothed change in attack strength. Red is smoothed change in defense strength.



	date	home		away		venue	pred.home	pred.away
18829	2013-11-17	Encinitas Express White B99	1	Pateadores Pre-Academy B99	0	SCDL FI1 U14	1.43	0.83
18640	2013-11-16	Pateadores Pre-Academy B99	0	FRAM Premier B99	2	SCDL FI1 U14	0.75	2.55
17878	2013-11-09	Pateadores Pre-Academy B99	0	Slammers FC B99	4	SCDL FI1 U14	1.21	2.14
16965	2013-11-02	Pateadores Pre-Academy B99	1	FC Golden State White B99	2	SoCal DL Fall Showcase Flight 1 U14	0.65	2.75
16070	2013-10-26	Pateadores Pre-Academy B99	1	San Diego SC Academy Navy B99	0	SCDL FI1 U14	1.25	0.71
14096	2013-10-12	Pateadores Pre-Academy B99	0	Slammers FC B99	1	SCDL FI1 U14	1.21	2.14
13417	2013-10-06	San Diego Surf SC Alvarez B99	2	Pateadores Pre-Academy B99	3	SCDL FI1 U14	1.43	2.07
13083	2013-10-05	Newport Mesa SC Waves B99	4	Pateadores Pre-Academy B99	1	SCDL FI1 U14	2.45	0.97
12123	2013-09-28	Pateadores Pre-Academy B99	2	San Diego Surf SC Academy II B99	1	SCDL FI1 U14	2.68	1.15
11181	2013-09-21	West Coast FC United B99	1	Pateadores Pre-Academy B99	2	SCDL FI1 U14	0.42	2.09
10205	2013-09-14	West Coast FC B99	2	Pateadores Pre-Academy B99	1	SCDL FI1 U14	2.27	1.16
9268	2013-09-07	Pateadores Pre-Academy B99	9	Nomads SC B99	0	SCDL FI1 U14	5.15	0.55